

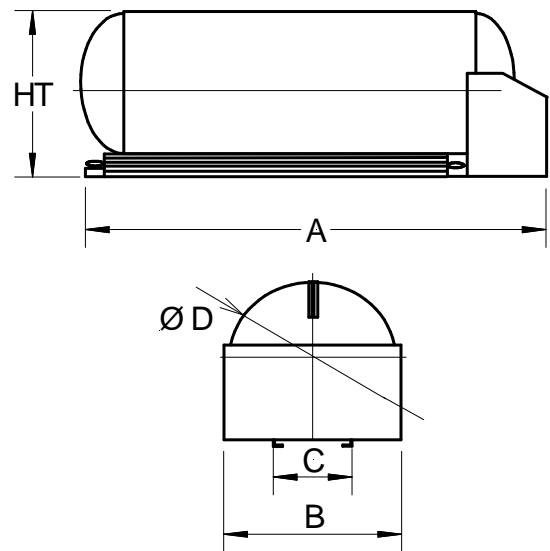
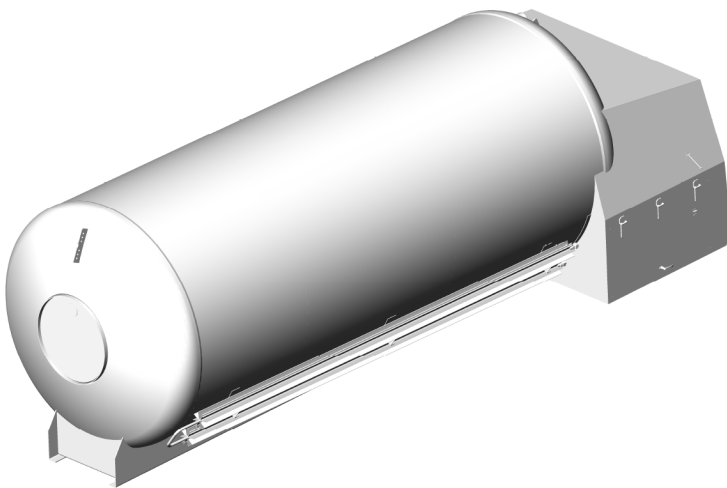
Cryolor introduces the latest generation vacuum isolated low pressure cryogenic mobile tank, the CT range, equipped with pumping group. 3 standard models from 8,000 to 14,000 liters with a Maximum Allowable Working Pressure of **3 bar**, the CT are built in accordance with the European Pressure Directive TPED 97/23/CE and ADR / EN 13530 for the transport of liquid nitrogen, oxygen or argon.

Applications:

- Refilling of small liquid containers of 180, 450, 1400 litres, ...
- Distribution of small quantities of liquid for research laboratories, dermatology, oxygen treatment, artificial insemination centres...
- Cryogenic applications for testing, grinding, refrigeration and other purposes
- Distribution or emergency repairs to gas application systems as for oven oxygenation, inerting purposes...

Key points:

- **Excellent solution for delivering medical oxygen to hospitals and difficult to access sites.**
- **The widest range of standard options:** The innovative modular piping system is designed and manufactured using standard, pre-assembled modules. The low pressure cryogenic mobile tank that can easily be "customised" to your specific requirements.
- **A maximum use of Stainless steel** ensures a longer, trouble-free life cycle with lower operational costs. All valves, interconnecting piping, the rear head of outer vessel and all welded connections are stainless steel.
- **Components selected for their operational reliability:** cryogenic pumps and other control cabinet's accessories supplied by the leading manufacturers.
- **Multi-layer insulation**
- **Light, high performance, maintenance free: high payload to tare weight ratio**



Type		CT 8	CT 14
Gross capacity (liters)		8 039	13 038
Net capacity (liters)		7 800 *	12 660 *
Daily evaporation rate (%) LOX		1	0.7
Weight empty (kg)		3 900	4 500
Diameter Ø		2 200	2 200
Height HT (mm)		2 320	2 320
Total length A (mm)		4 900	6 800
Total width B (mm)		2 400	2 400
Distance between support beams C (mm)		870	870
Nitrogen payload	98% trycock (Kg)	6 303 *	10 230 *
Oxygen payload	98% trycock (Kg)	8 900 *	14 445 *
Argon payload	80% trycock (Kg)	8 900 *	14 445 *

* Depends of total weight and type of trucker