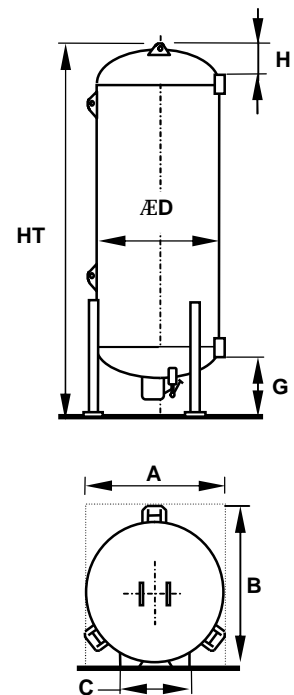
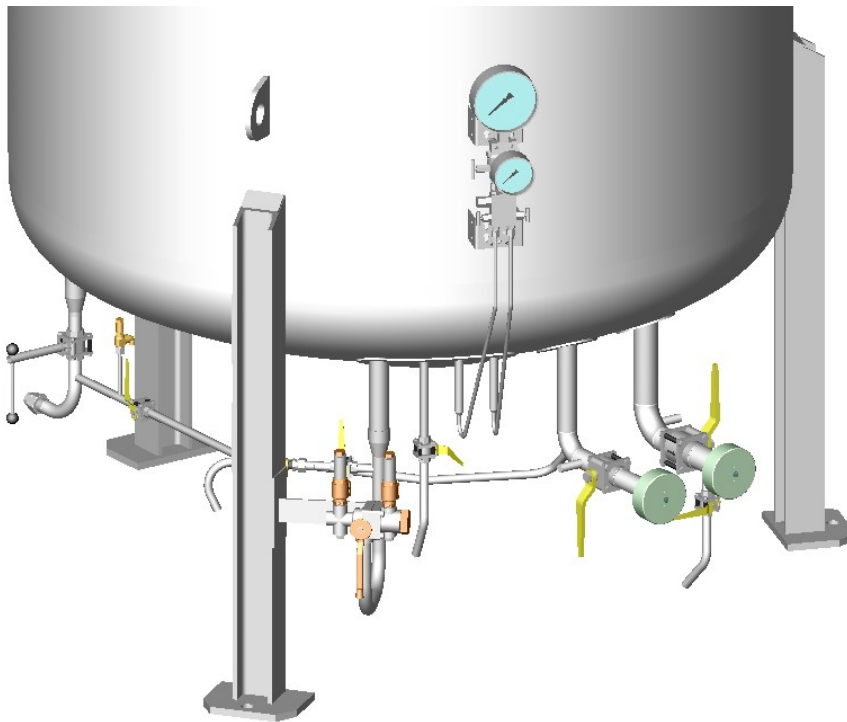


Inner vessel  
in carbon steel

CRYOLOR introduces the latest generation vacuum isolated cryogenic tank, the RCV Céline 3, for liquid CO<sub>2</sub> and N<sub>2</sub>O service, with inner vessel in carbon steel. Available in a wide range of sizes with a Maximum Allowable Working Pressure of **22 bar** (≈320 psig), RCV Céline 3 is designed in accordance with the European Pressure Directive PED 97/23/CE and EN 13458. Moreover, the support legs used in the RCV Céline 3 range are calculated to resist high winds and earthquakes (Eurocode 1 and 8 and UBC zone 3).

- The widest range of standard options : introduced by CRYOLOR, our innovative modular design using prefabricated piping modules, allows the basic model to be customized to satisfy virtually all possible technical requirements.
- A maximum use of Stainless steel: Only Céline 3 uses as much stainless in its construction to guarantee the lowest life cycle costs - valves, interconnecting piping and all welded connections are stainless.
- Components selected for their operational reliability - safety system with dual relief valves, stainless valves.
- Reduced overall operational costs - optimized pipework layout with fewer connections minimize potential leaks and facilitate operation & servicing, filling assembly isolation valves as standard, proven painting techniques guarantee years of care-free operation.

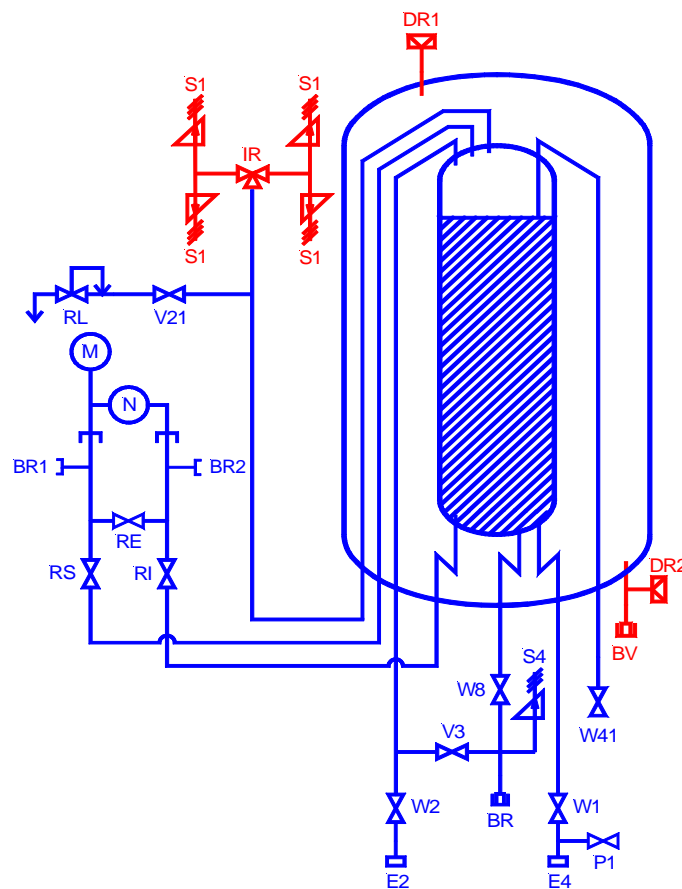


Type	RCV3	RCV6	RCV10	RCV21	RCV37	RCV58	RCV68
Gross capacity (liters)	3 220	5 550	9 990	20 120	36 180	57 320	67 890
Net capacity (liters)	2 962	5 106	9 191	18 510	33 286	52 734	62 458
Net capacity with condensing coil (liters) *	2 890	5 106	9 191	18 510	33 286	52 734	62 458
Daily evaporation rate CO <sub>2</sub> (%)	0,093	0,086	0,080	0,070	0,050	0,030	0,030
Empty weight (kg)	3 000	4 000	6 100	10 700	17 500	25 700	29 500
Weight full CO <sub>2</sub> (kg)	6 119	9 377	15 778	30 191	52 550	81 229	95 268
Weight full N <sub>2</sub> O (kg)	5 968	9 116	15 309	29 247	50 853	78 539	92 083
∅ Diameter (mm)	1 900	1 900	1 900	2 200	2 840	2 840	2 840
HT height (mm)	3 580	4 890	7 530	9 530	9 900	14 530	16 740
H (mm)	480	480	480	520	650	3 660	3 660
G (mm)	1 025	1 025	1 025	1 080	1 100	1 100	1 100
A (mm)	2 200	2 200	2 200	2 300	2 950	2 999	2 999
B (mm)	2 200	2 200	2 200	2 500	3 300	3 220	3 220
C (mm)	1 100	1 100	1 100	1 245	1 530	1 530	1 530

\* option OP1401 / see technical data sheet S0000586

REF	NOMENCLATURE	ND
W1	Bottom filling valve	ND40
W2	Top filling valve	ND40
S4	Line safety valve	1/4"
E2	Filling connection	ND40
E4	Filling connection	ND40
S1	Inner vessel safety valve	ND15
IR	3-way valve	ND15
M	Pressure indicator	
N	Level indicator	
RI	Low shut-off valve	
RE	Equalizer valve	
RS	High shut-off valve	
W41	Full trycock valve	ND15
DR1	Outer vessel protection device	ND70
DR2	Outer vessel protection device	ND70
BV	Vacuum connection	
W8	Liquid withdrawal valve	ND25
BR	Withdrawal connection	ND25
P1	Purge valve	ND15
RL	Pressure limiter	1/2"
V21	Vent valve	ND15
V3	Withdrawal pressure valve	ND15
BR1-BR2	Pressure coupling	

### FLOW DIAGRAM



To adapt the RCV to your requirements, see option sheet N° S0000586