

VERTICAL CRYOGENIC STORAGE TANK - CO₂

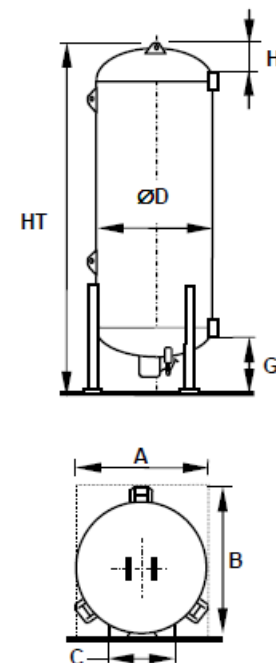
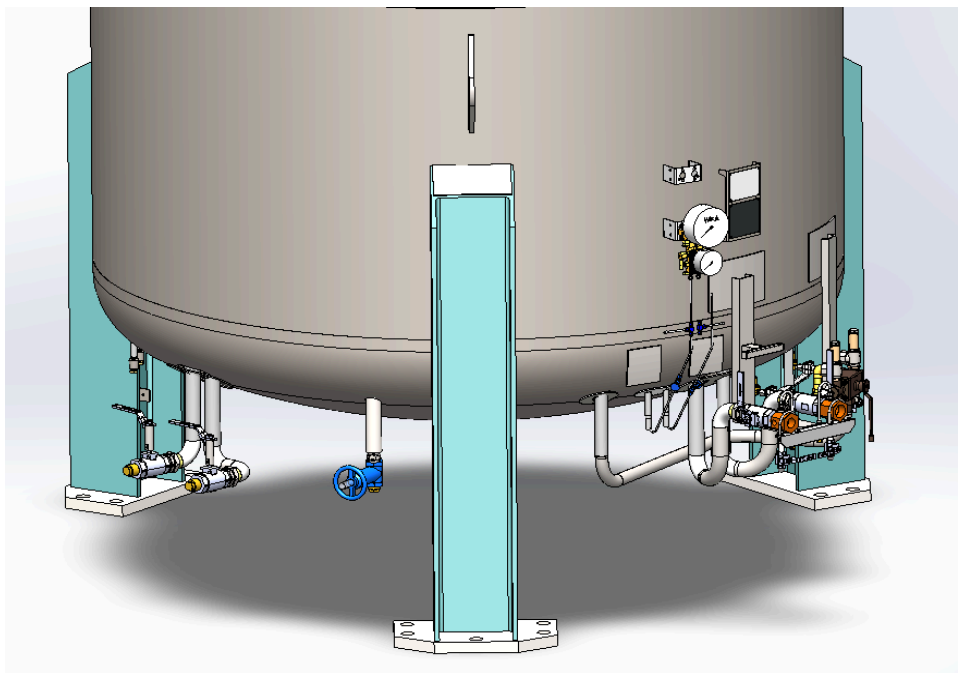
USA STOCK



CRYOLOR ASIA PACIFIC introduces the latest generation vacuum insulated cryogenic tank, the **RCIA Céline 3**, for Liquid Carbon dioxide service with **Stainless steel** inner vessel. Available in a range of sizes with a Maximum Allowable Working Pressure of **350 psig** (≈ 24 bar), **RCIA Céline 3** is designed in accordance with **ASME Section VIII Division 1 + Mandatory appendix-44 (cold stretch)** with **ASME certification mark with 'U' designator**.

Moreover, the support legs used in the Céline 3 range are calculated to resist high winds and earthquakes according to IBC code with Ss 2.0 and wind speed 190 mph.

- **A maximum use of Stainless steel** - Only WorldTank uses as much stainless steel in its construction to guarantee the lowest life cycle costs - valves, interconnecting piping, PR coil and all welded connections are stainless steel.
- **Components selected for their operational reliability** - mono-bloc pressure building economizer - regulator, safety system with dual relief valves and burst discs as standard, stainless steel valves.
- **Reduced overall operational costs** - optimized pipework layout with fewer connections minimize potential leaks and facilitate operation & servicing, filling assembly isolation valves as standard, proven painting techniques guarantee years of care-free operation.



Disclaimer: The image shown above is just a representation of the tank, The actual product may vary in appearance and size.

VERTICAL CRYOGENIC STORAGE TANK - CO₂

USA STOCK



TYPE	RCIA 06 (6 TON)	RCIA 14 (14 TON)	RCIA 30 (30TON)	RCIA 35 (35 TON)	RCIA 50 (50 TON)
Gross capacity (USG) *	1625	3365	7407	9072	12569
Net capacity (USG) *	1495	3096	6815	8346	11552
Empty weight (lbs) **	10141	15653	28660	35274	46738
Maximum weight Carbon dioxide (Ton) ***	6.3	13.1	28.8	35.3	49.0
Daily Evaporation rate CO ₂ (% per day in CO ₂)	0.20	0.15	0.08	0.06	0.05
Ø Diameter (in)	86.6			111.8	
HT (in)	165.3	251.9	462.2	352.6	454.5
H (in)	20.4			25.6	
G (in)	41.5		42.5	43.3	
A (in)	88.6		90.5	118.1	
B (in)	96.4		98.4	131.9	
C (in)	49			60.2	

Trycock level is 92%.

* Manufacturing tolerance : ± 4%

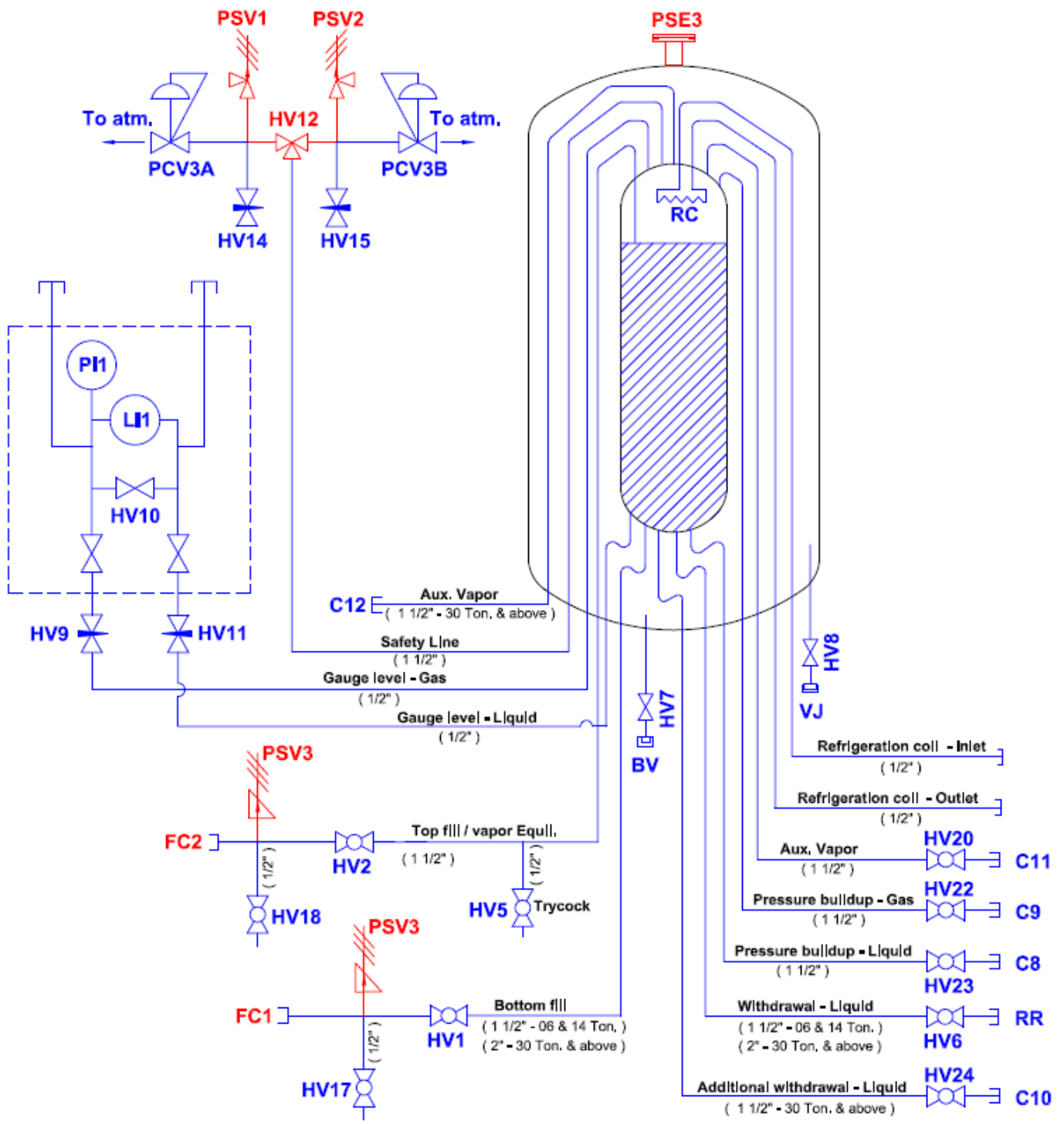
** The indicated tanks' empty weight is intended for foundation and handling.

*** LCO₂ weight is calculated by the density of 63.36 lbs/ft³ at an operating pressure of 300 psig.

VERTICAL CRYOGENIC STORAGE TANK - CO₂

USA STOCK

FLOW DIAGRAM



Red = EIS (Element Important for Safety)

VERTICAL CRYOGENIC STORAGE TANK - CO₂

USA STOCK



REFERENCE	DESCRIPTION	SIZE		VALVE	
		06 & 14 Ton	30, 35 & 50 Ton	MANUFACTURER	MODEL NUMBER
BV	Vacuum pump down connection	-	-	-	-
C8, C9	Connections for pressure buildup unit	1 1/2"		-	FNPT threaded with Male plug
C10	Add. Liquid withdrawal connection	-	1 1/2"	-	FNPT threaded with Male plug
C11	Connection for Auxiliary Vapor	1 1/2"		-	FNPT threaded with Male plug
C12	Connection for Auxiliary vapor	-	1 1/2"	-	No valve with FNPT thread with Male plug
FC1	Bottom filling coupling	1 1/2"	2"	-	CGA Brass Coupling
FC2	Top filling coupling	1 1/2"		-	CGA Brass Coupling
HV1	Filling liquid	1 1/2"	2"	Jamesbury	9FB3600XTB
HV2	Filling gas	1 1/2"		Jamesbury	9FB3600XTB
HV5	Full trycock	1/2"		Jamesbury	9FB3600XTB
HV6	Liquid use	1 1/2"	2"	Jamesbury	9FB3600XTB + Extended stem JV SE-095
HV7	Vacuum isolation valve	1 1/2"		Saunders	2205-S-11R-CV
HV8	Vacuum probe isolation valve	1/8"		Hoke	4551-F2B-1/8"
HV9	Level gauge manifold, Gas	OD 1/4"		Swagelok	SS-1RS4-SC11
HV11	Level gauge manifold, Liquid				
HV12	3 way diverter	3/4"	1 1/4"	Herose	Type 06512
HV14 & HV15	Vent valve for safety tree	1/4"		Generant	FNV-4 MFB-X
HV17	Purge valve	1/2"		Jamesbury	9FB3600XTB
HV18	Purge valve	1/2"		Jamesbury	9FB3600XTB
HV20	Auxiliary Vapor	1 1/2"		Jamesbury	9FB3600XTB
HV22	Pressure building - Gas	1 1/2"		Jamesbury	9FB3600XTB + Extended stem JV SE-095

VERTICAL CRYOGENIC STORAGE TANK - CO₂

USA STOCK



REFERENCE	DESCRIPTION	SIZE		VALVE	
		06 & 14 Ton	30, 35 & 50 Ton	MANUFACTURER	MODEL NUMBER
HV23	Pressure building - Liquid	1 1/2"		Jamesbury	9FB3600XTB + Extended stem JV SE-095
HV24	Additional Liquid Withdrawal	-	1 1/2"	Jamesbury	9FB3600XTB + Extended stem JV SE-095
LI1	Mechanical liquid level gauge	-		WIKA	MODEL: 712.15.160
PI1	Mechanical pressure gauge				
HV10	Level gauge manifold, Equalizer				
PSE3	Annular space pressure relief	-		Cryolor	-
PSV1 & PSV2	Vessel safety relief valve(SRV)	1/2"	1"	Herose	Type 06388 (Set @ 350 Psig)
PSV3	Thermal relief valve	1/4"		Generant	CRB-250B-K-350
PCV3A, B	Back pressure regulator	1/4"		Generant	BPR-250I-D-O2 (Set @ 490 Psig)
RC	Refrigeration coil	1/2"		Cryolor	-
RR	Liquid use connection	1 1/2"	2"	-	FNPT threaded with Male plug
VJ	Vacuum gauge / sensor	1/8"		Teledyne Hastings	DV-6R

Note:

- This technical specification is purely an indication, It can't be considered as a contractual document.
- This technical specification is subject to change without prior intimation.